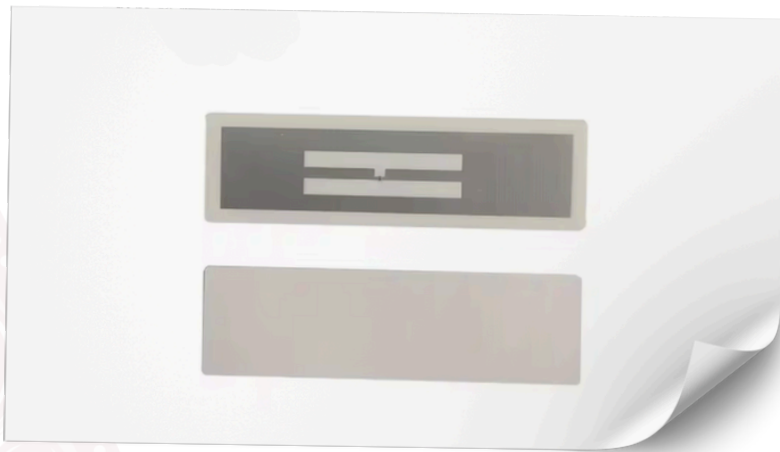


Anti-Liquid Tag



Liquid-Friendly RFID, Built for Extreme Cold

Experience unmatched performance in RFID tagging, specially engineered for challenging liquid environments. With an ultra-slim, discreet profile, this innovative tag seamlessly integrates into your operations, ensuring precise and reliable detection even when directly applied to liquid-filled containers.

Built to thrive in extreme conditions, this tag maintains optimal functionality at temperatures ranging from -35°C to 85°C. Its robust construction ensures sustained performance, making it an ideal choice for industries where maintaining data integrity and accuracy in harsh environments is critical.

Enhance your operational efficiency and asset tracking precision with a tag designed for endurance and adaptability. From cold chain logistics to industrial liquid management, trust this advanced RFID solution to deliver consistent, accurate scanning every time.

Overview

Frequency Band

UHF 920 - 923 Mhz (ID)

Chip

Impinj Monza[®] R6-P

Material

White Printable PP

Tag Dimension

70 x 20 x 0.2 mm

Compliance

EPC Class1 Gen2, ISO18000-6C

Industry Segments

Cold Chain & Logistics
Pharmaceuticals
Chemical & Industrial
Retail & Supply Chain
Manufacturing
Food & Beverage

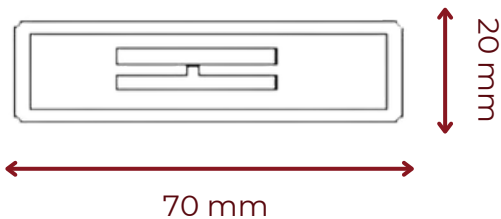
Applications

Cold Storage Asset Tracking
Liquid Container Identification
Industrial Process Monitoring
Vaccine & Medicine Logistics
Smart Inventory Management
Quality Control & Compliance

Technical Features

Chip	Impinj Monza® R6-P
EPC & User Memory	128 bits & 32 bits
TID Memory	96 bits
Frequency Band	920 - 923 MHz (ID)
Dimension	70 x 20 x 0.2 mm
Material	White Printable PP (Polypropylene)
Installation Method	Adhesive (Glue)
Read Cycle & Lifetime	100,000 Programming cycles & 50 years of data retention
Customization Options	Custom color printing (embossing or laser-engraving), barcode or text, personalization encoding
Operating Mode	Passive
Storage Temperature	0°C to 25°C
Operating Temperature	-35°C to 85°C
Relative Humidity	10% - 95% (Variant Performance)

Product Overview



Contact Information

www.tudi.id/contact-us
+62 877-3201-8345

Connect with us on  

© 2025 **TUDI**. All rights reserved. Ruko BE01A, Jl. Citra Dua Extension No.5, Pegadungan, Kec. Kalideres, Kota Jakarta Barat, Jakarta 11830, Indonesia. Third-party trademarks and/or trade names used herein are the property of their respective owner(s) and appear solely for identification purposes.