

# Wet Inlay Tag



## A smart adhesive tag for seamless tracking and identification.

The Wet Inlay Tag is a lightweight and flexible RFID solution designed for seamless tracking and data capture. Featuring an adhesive backing, it easily adheres to various surfaces, ensuring efficient integration into asset management and inventory systems. Its compact design and reliability make it an ideal choice for businesses aiming to enhance operational efficiency.

Key features include its durable, moisture-resistant construction and flexibility to conform to uneven surfaces, ensuring consistent performance in diverse environments. With pre-laminated durability, these tags provide long-lasting use, reducing maintenance and improving accuracy in tracking and identification processes.

Widely applied across industries, Wet Inlay Tags support real-time inventory management in retail, enhance asset monitoring in logistics, and streamline equipment tracking in healthcare. Their versatility and ease of application make them an indispensable tool for improving operational visibility and control.

## Overview

### Frequency Band

UHF 920 - 923 Mhz (ID)

### Chip

Impinj Monza® R6-P

### Antenna Dimension

15 x 40 mm

### Wet Size

18 x 43 mm R1.5

### International Standard

ISO 18000-6C

### Industry Segments

Logistics  
Supply Chain  
Retail  
Manufacture  
Healthcare  
Hospitality  
Food & Beverage

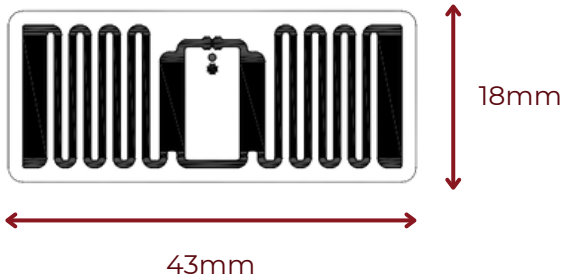
### Applications

Asset Tracking  
Inventory Management  
Equipment Monitoring  
Anti-theft Solution  
Part Tracking  
Product Authentication  
Quality Control

## Technical Features


Chip	Impinj Monza® R6-P
EPC & User Memory	128 Bits & 32 Bits
TID Memory	96 Bits with 48 Bits Serial Number
Frequency Band	920 - 923 MHz (ID)
Delivery Format	Label
Read Cycle & Lifetime	100,000 Programming cycles, 50 Years of Data Retention
Face Material	White PET
Inlay Substrate	PET
Operating Mode	Passive
Operating Temperature	-5~60°C / Humidify 20%~80%

## Product Overview



### Contact Information

[www.tudi.id/contact-us](http://www.tudi.id/contact-us)  
+62 877-3201-8345

Connect with us on  

© 2025 **TUDI**. All rights reserved. Ruko BE01A, Jl. Citra Dua Extension No.5, Pegadungan, Kec. Kalideres, Kota Jakarta Barat, Jakarta 11830, Indonesia. Third-party trademarks and/or trade names used herein are the property of their respective owner(s) and appear solely for identification purposes.



[www.tudi.id](http://www.tudi.id)