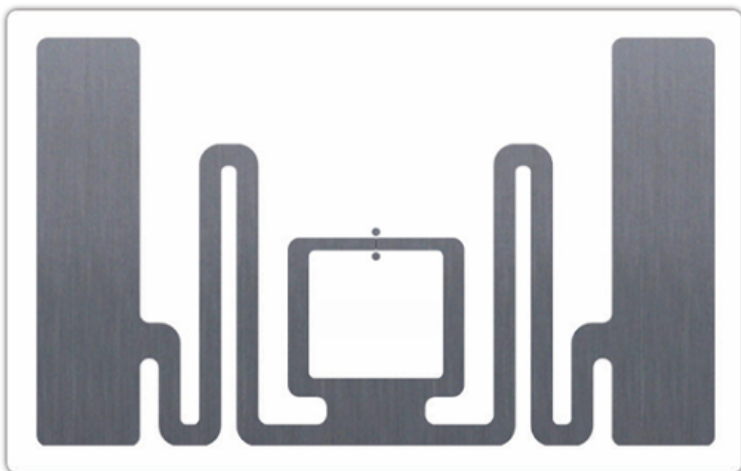


## UHF RFID Label 54 x 34 mm



### High-Performance UHF RFID Label for Logistics and Inventory Applications

The UHF RFID Label 54 x 34 mm Label is a global UHF RFID label designed for general item tracking across logistics, retail, and inventory environments. Built with a PET inlay and coated paper face material, it supports stable RFID performance on non-metal surfaces and offers read ranges up to 10 meters when used with standard handheld RFID readers.

With multiple Impinj chip options and durable adhesive construction, the UHF RFID Label 54 x 34 mm enables reliable identification for cartons, apparel, and packaged goods while providing long data retention and consistent performance in typical indoor storage and operational conditions.

## Overview

---

### Frequency Band

UHF 860-960 MHz (Global)

---

### Chip

Impinj M830 128-bit EPC memory

---

### Tag Dimension

54 x 34 mm

---

### Antenna Size

50 x 30 mm

---

### Base Material

PET Inlay

---

### Face Material

80 g Coated Paper

---

### Application Surface

Non-metal surface

---

### Industry Segments

- Retail
- Logistics & Warehousing
- Apparel & Textile
- Inventory Management

---

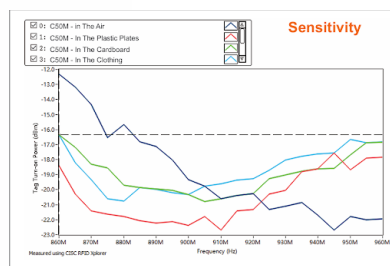
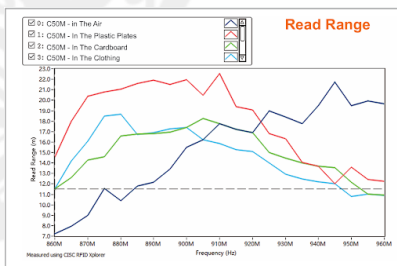
### Application

- Item-Level Tagging
- Carton and Package Identification
- Retail Inventory Tracking
- Clothing and Textile Labeling

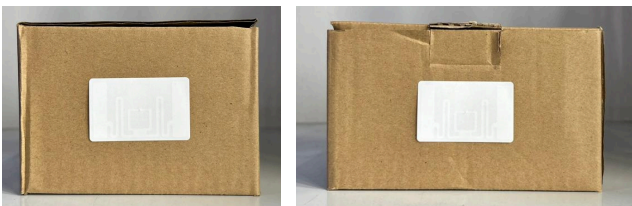
## Product Features

<b>Air Interface Protocol</b>	EPC Global Class1 Gen2 / ISO18000-6C
<b>Operating Frequency</b>	Global 860-960 MHz
<b>Chip</b>	Impinj M830 128-bit EPC Memory
<b>IC Life (Write Cycles)</b>	100,000 times
<b>Data Retention</b>	10 years
<b>Reading Range</b>	≥ 10 m (US Standard, Handheld 1W)
<b>Application Surface</b>	Non-metal
<b>Operating Temperature</b>	-20°C to +80°C
<b>Storage Temperature</b>	-20°C to +100°C
<b>Storage Humidity</b>	20%-90% RH
<b>Shelf Life</b>	>2 years (20-30°C, 40-60% RH)
<b>Label Structure</b>	Face Material + Hot-Melt Adhesive + Inlay + Glassine Liner
<b>Installation Method</b>	Adhesive Label
<b>Quantity per Roll</b>	2500 pcs/roll (Customizable)
<b>Reel Inner Diameter</b>	76.2 mm
<b>Tag Pitch</b>	40.005 mm

## Tag Performance



## Product Overview



**Contact Information**  
[www.tudi.id/contact-us](http://www.tudi.id/contact-us)  
 +62 877-3201-8345

Connect with us on [in](#) [o](#)

© 2025 **TUDI** All rights reserved

Ruko BE01A, Jl. Citra Dua Extension No.5, RW.6, Pegadungan, Kec. Kalideres, Kota Jakarta Barat, Daerah Khusus Ibukota Jakarta 11830.  
 Third-party trademarks and/or trade names used herein are the property of their respective owner(s) and appear solely for identification purposes.